

AU Community Liaison Committee Special Sessions: 2021 Campus Plan

April 28 and 30, 2020

April 28: Potential Development and Enrollment

April 30: Student Life & Safety and Parking & Transportation

Meeting Overview: April 28, 2020

Welcome and Ground Rules (Seth Grossman, AU Chief of Staff; Don Edwards and Kayla Elson, JSA)

Technology Review (Kayla Elson)

Preliminary Framework Overview (Ed Fisher, AU AVP Community & Government Relations)

Potential Development Sites and Campus Character (Matt Bell, Perkins Eastman)

Enrollment (Ed Fisher)

Virtual Break Out Sessions (meeting attendees will have the opportunity to participate in sessions for both topics)

Potential Development Sites and Campus Character

Enrollment

Good of the Order, Adjourn (Don Edwards)

Welcome



Ground Rules

Respect the Process

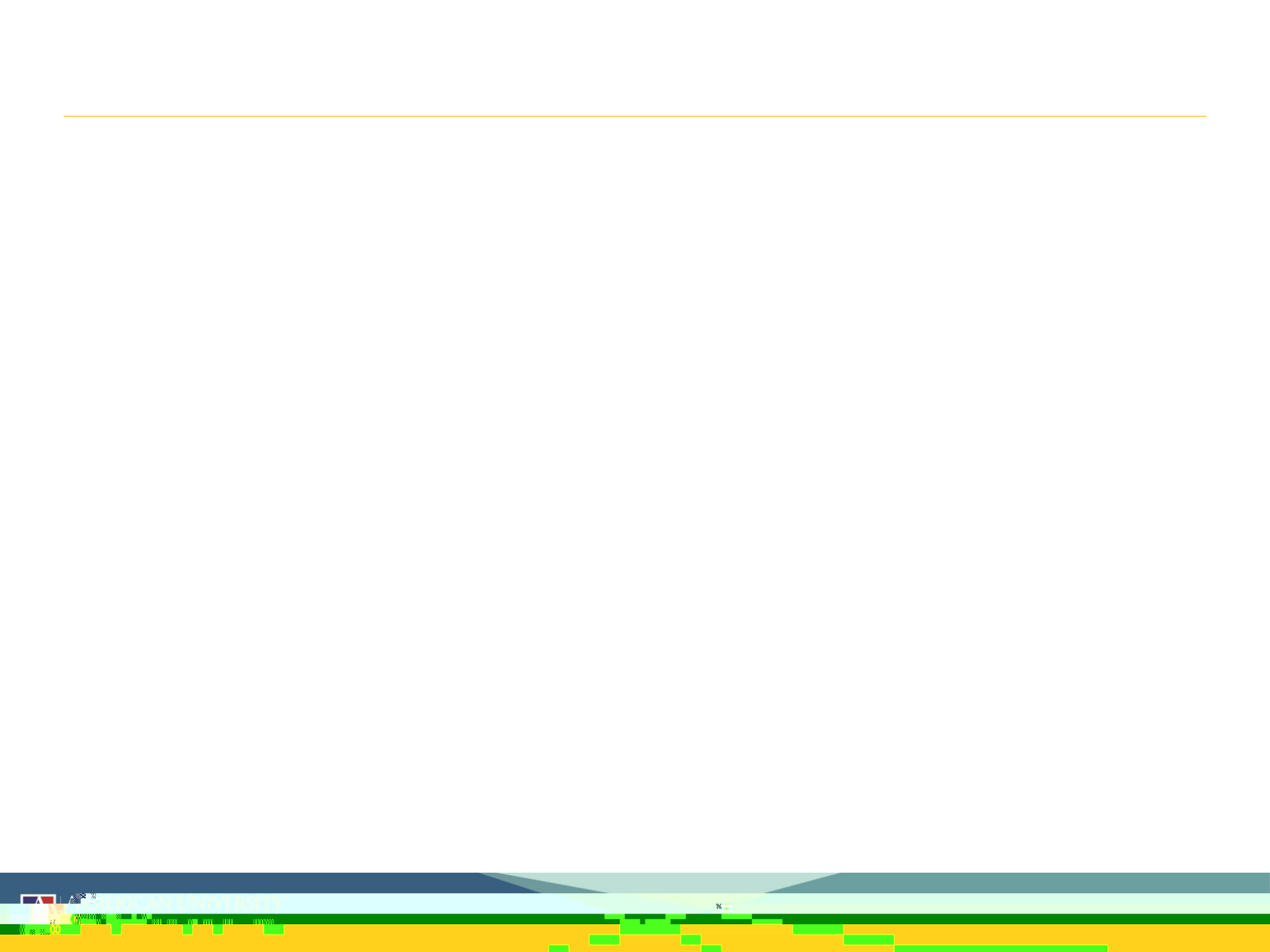
Be Present and Engaged

Follow the Directions

Allow Every Voice to be Heard

Speak Courteously and Respectfully to Others

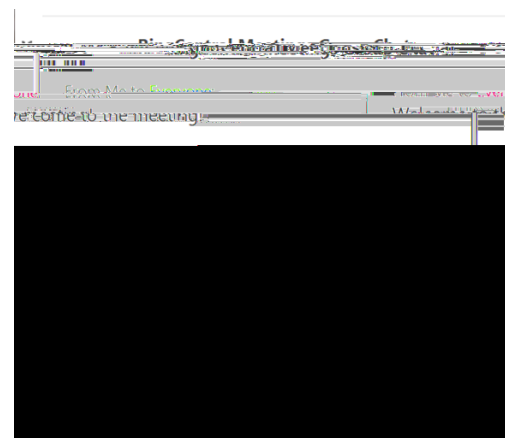
Maintain Zero Tolerance for Any Comment
(Verbal or Written) That is Meant to Attack or
Intimidate Another Person, or is Obscene



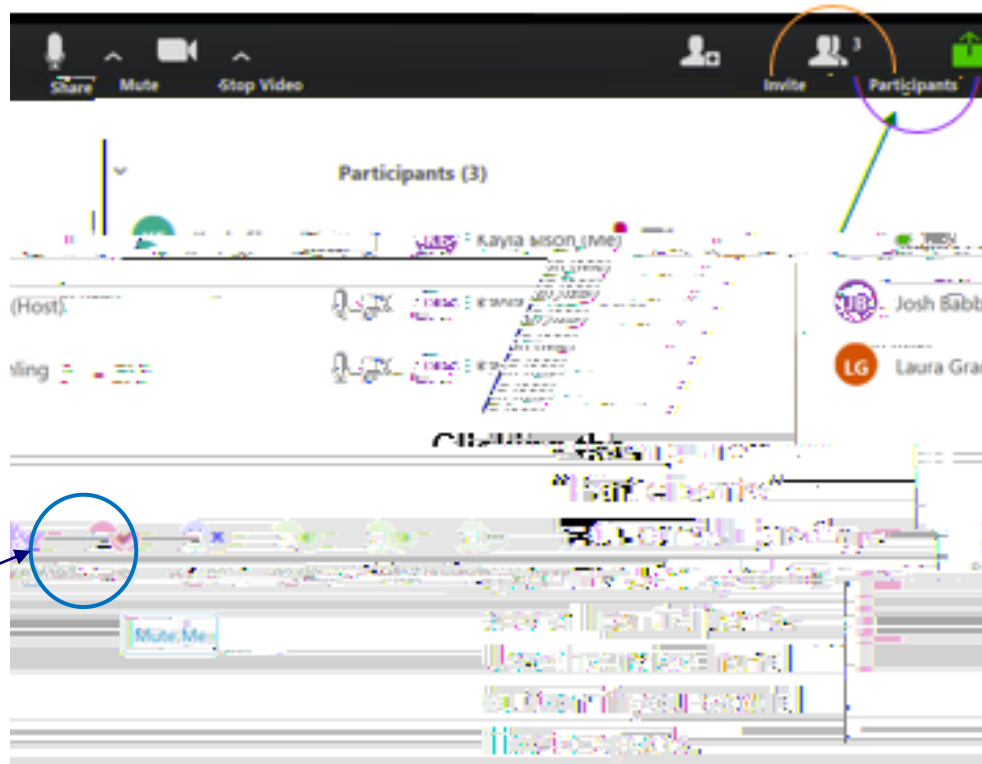


- When the mic is muted a red slash will appear over the microphone icon. Meeting participants will be muted by default except during discussion periods.
- The Video button controls access to your webcam.

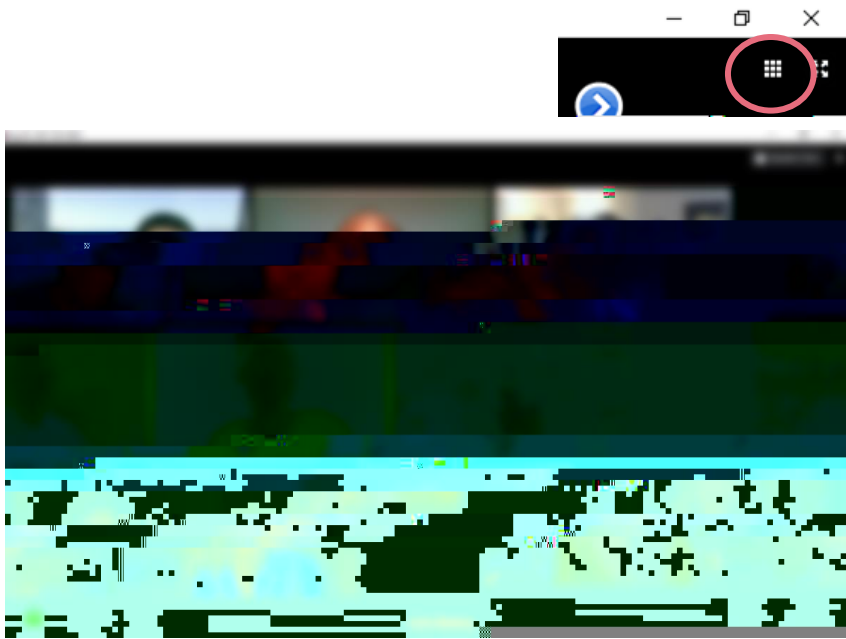
Chat for Questions and Comments.



Toolbar Function: Audio, Video, & Chat



Toolbar Function: Hand-Raising Feature



Speaker & Gallery View

Preliminary Framework Overview



Potential Development Sites and Campus Character



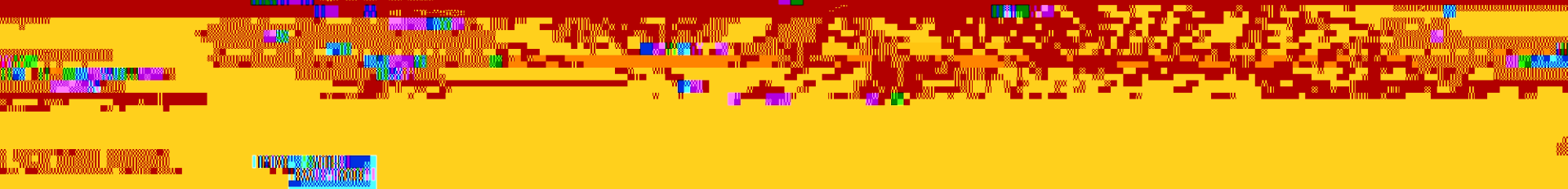


POTENTIAL DEVELOPMENT RESOURCES AND CONSTRAINTS

ACADEMIC/ADMINISTRATIVE



on-campus master leased beds to Sites 1, 2, 3, 5, 6, and 7



CAMPUS PLACES AND MOBILITY CONCEPTS

POTENTIAL DEVELOPMENT SITES



DESIGN PRINCIPLES

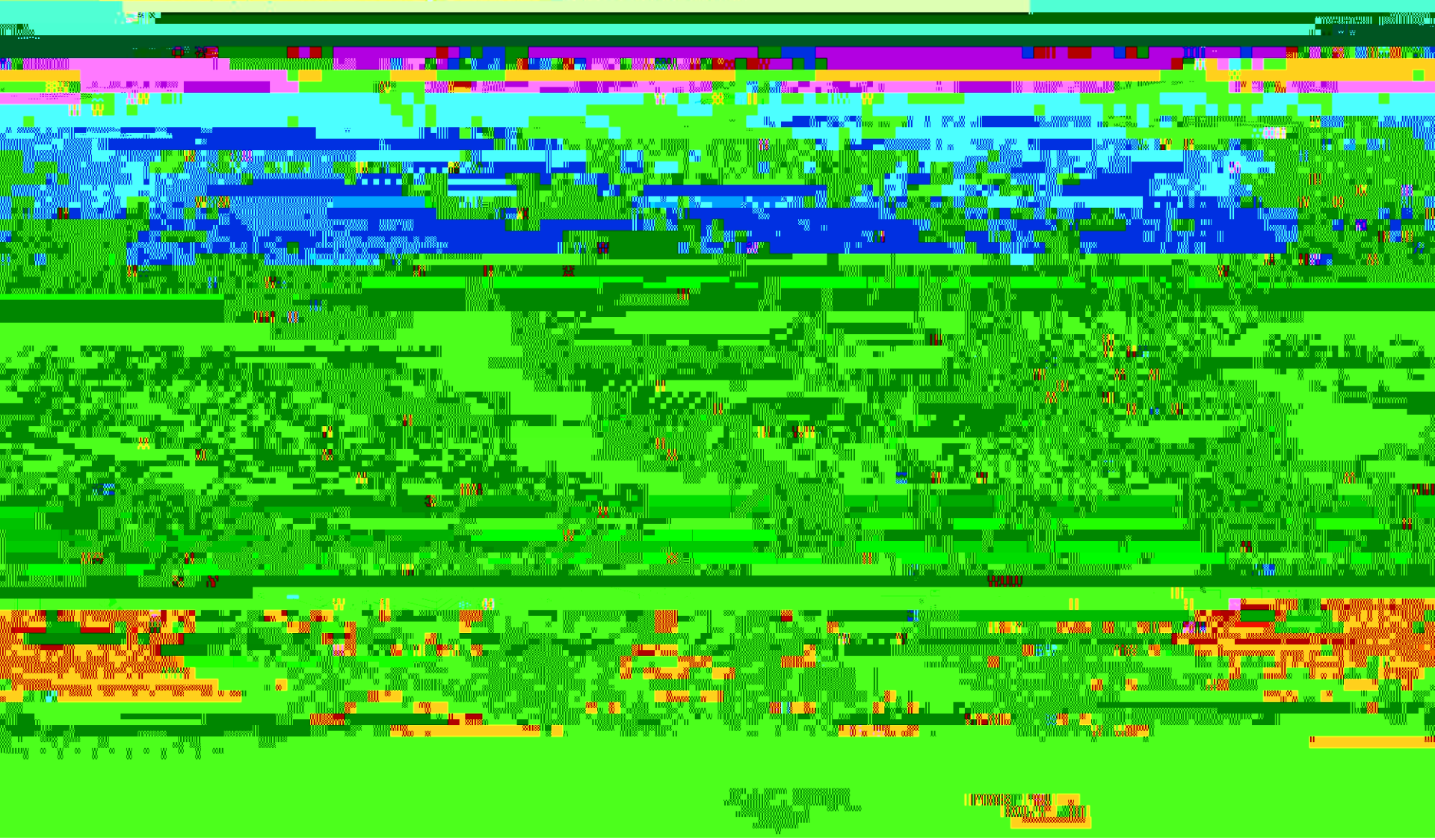
Beeghy Building:
• Core 1
• Beeghy Hall for



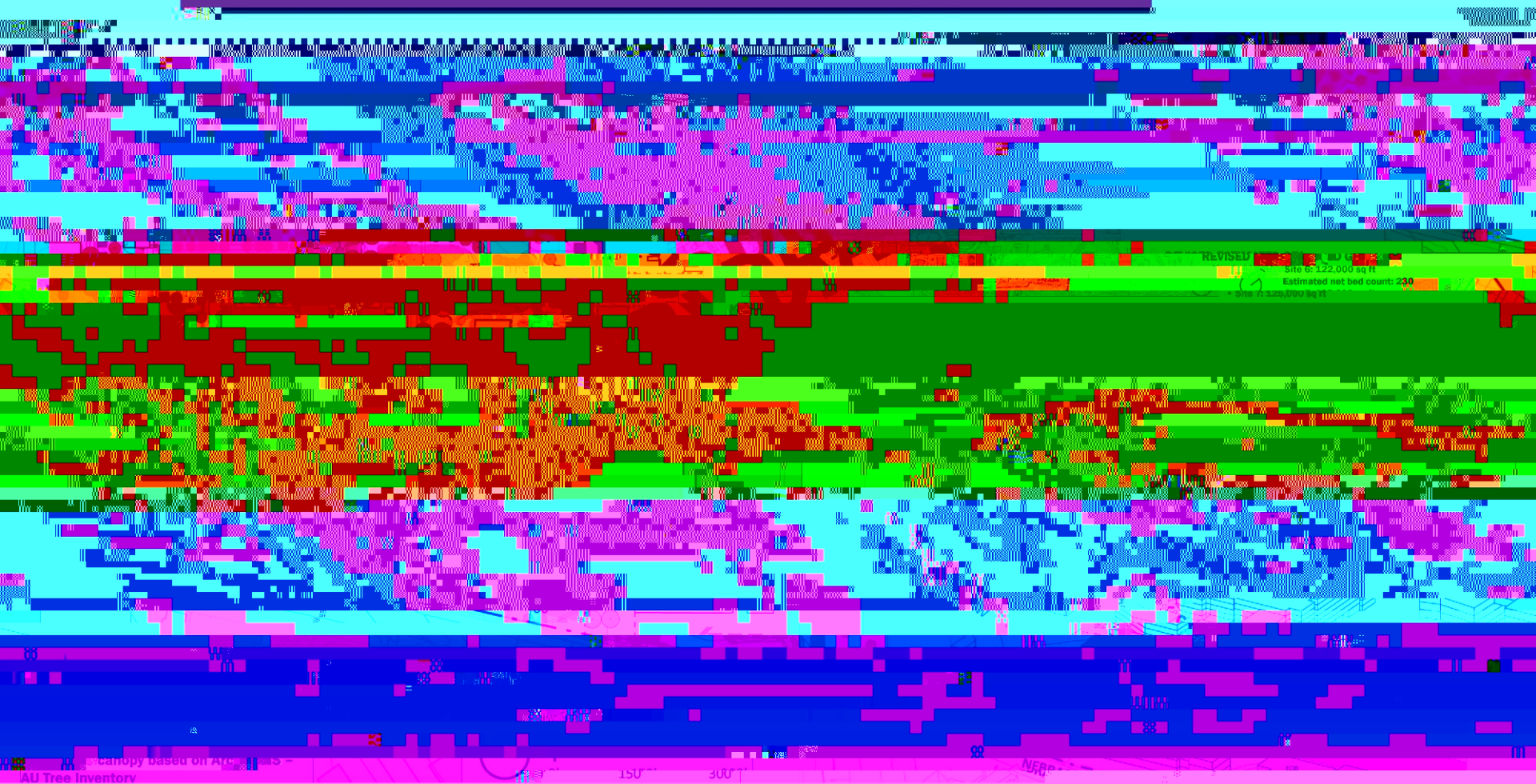
Estimated Building up to 110



SITES 4 AND 5 ALTERNATIVE CLOSURE



SITES 6 AND 7 ALTERNATIVE NUMBER



Canopy based on AU Tree Inventory



SITES 6 AND 7 ALTERNATIVE CONCEPT

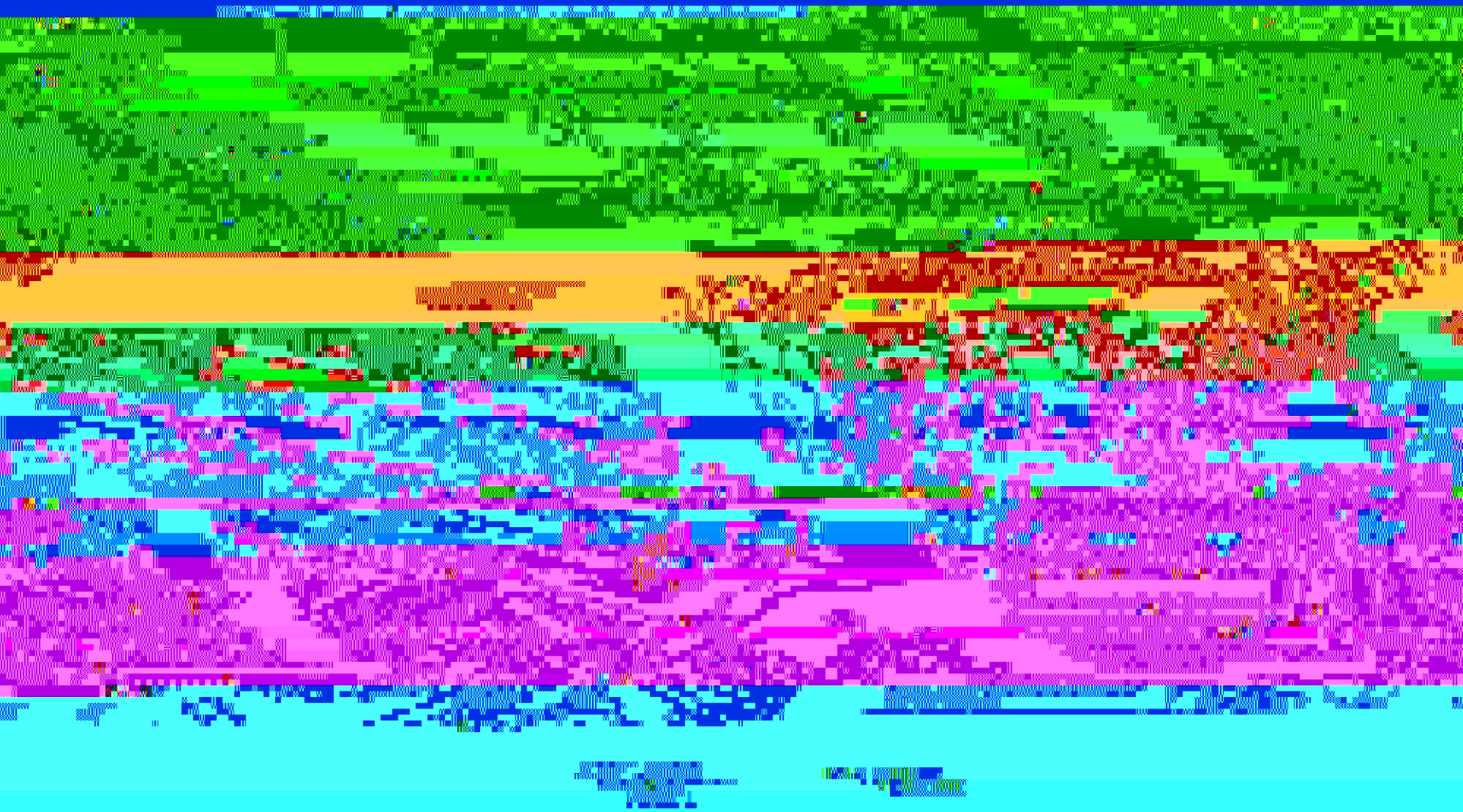


SUPREMACY 2015 SUPREMACY 150th ANNUAL CONCERT

11:00pm - 12:00am

WFLA-TV

WFLA-TV



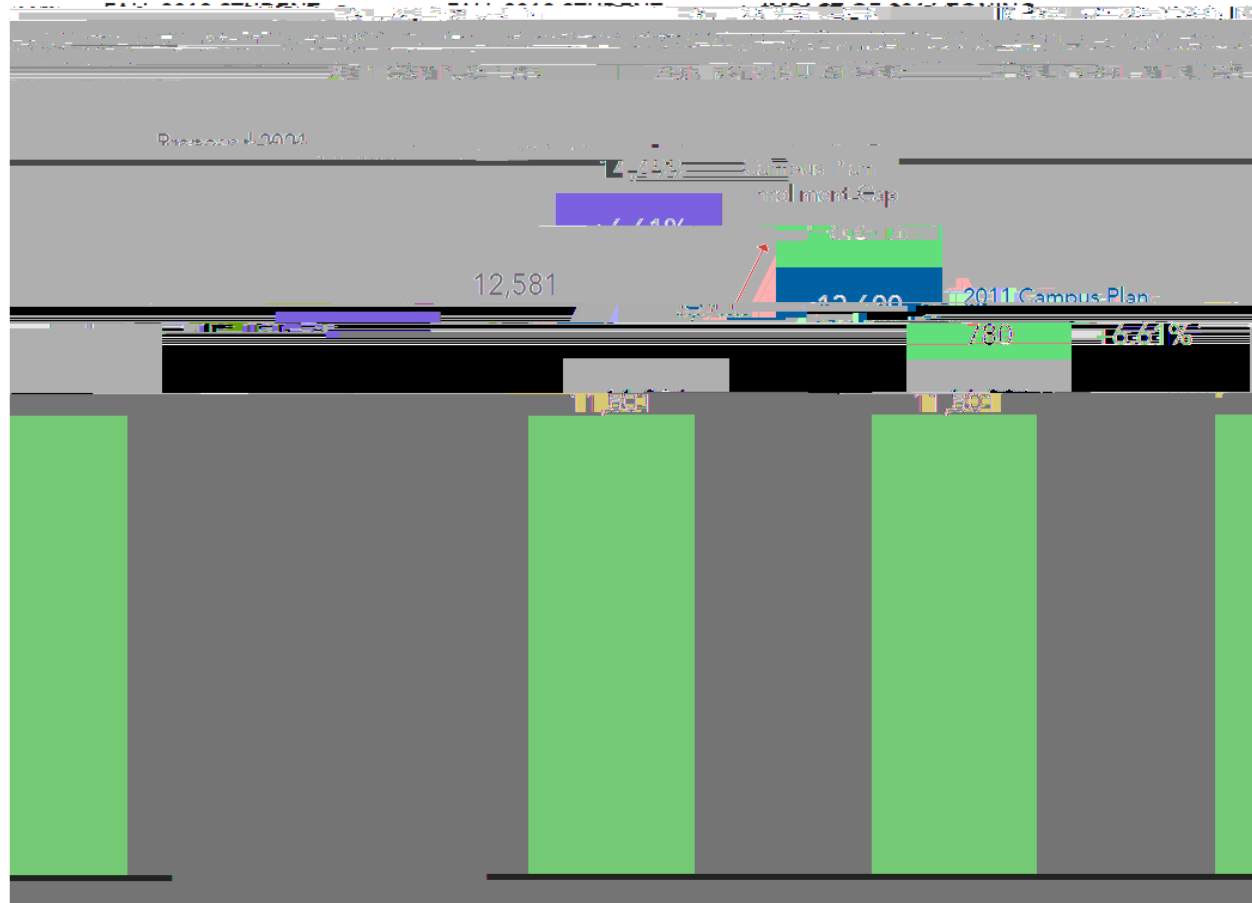
Enrollment

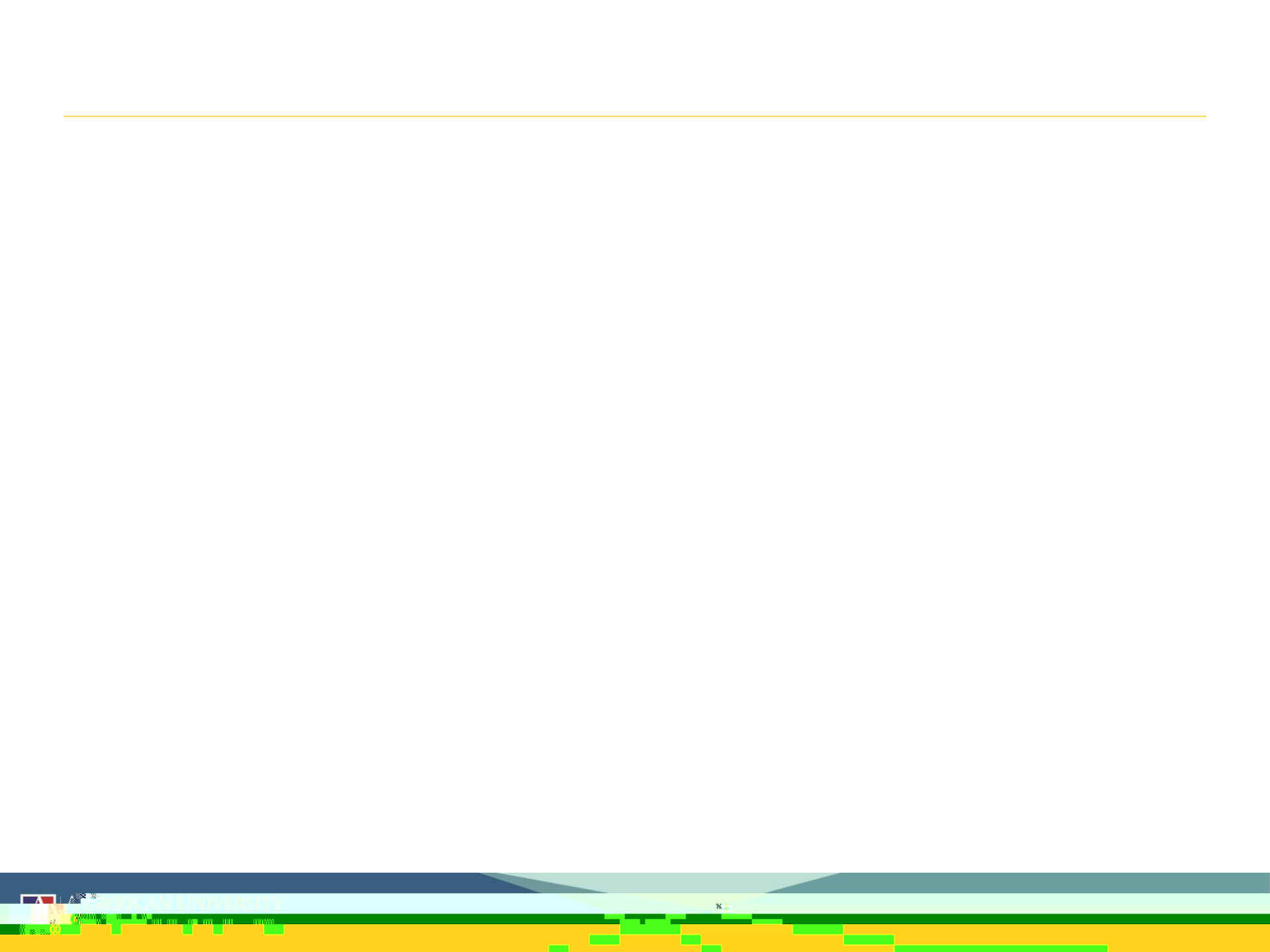


Enrollment: Impact of 2016 Zoning Regulations



Enrollment: Proposed Cap





Enrollment: Forecast



Enrollment: Impact of COVID-19



Virtual Break Out Session: Potential Development Sites and Campus Character



Virtual Break Out Session: Enrollment



Upcoming Meetings

April 30: Special CLC Campus Plan Meeting addressing Student Life & Safety and Transportation & Parking (registration required)

May 19: Planning 101 Session (registration required)

June 9: Quarterly CLC MC q B MC q 8ulyJune 9:



Closing Remarks



AU Community Liaison Committee Special Session #2: 2021 Campus Plan

April 30, 2020

Student Life & Safety
Parking & Transportation

Meeting Overview: April 30, 2020

Welcome and Ground Rules (Seth Grossman, AU Chief of Staff;
Don Edwards and Kayla Elson, JSA)



Welcome



Ground Rules

Respect the Process

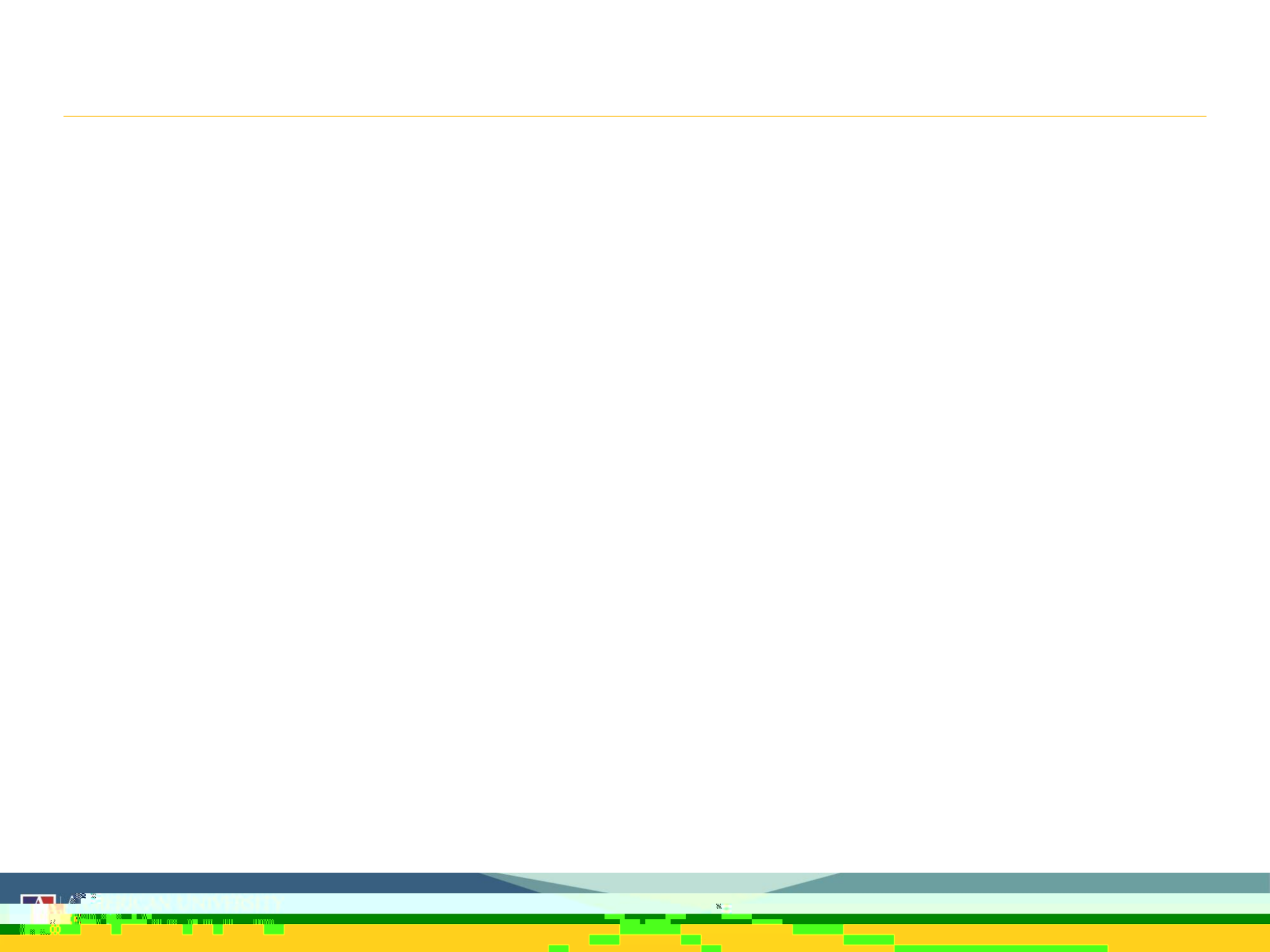
Be Present and Engaged

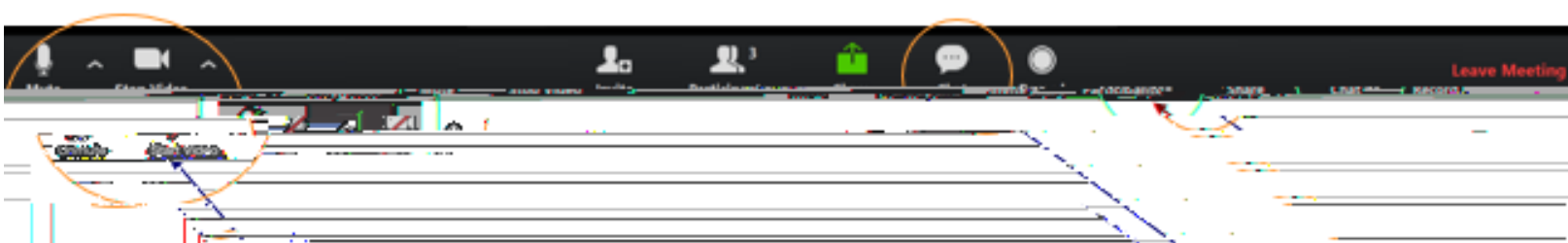
Follow the Directions

Allow Every Voice to be Heard

Speak Courteously and Respectfully to Others

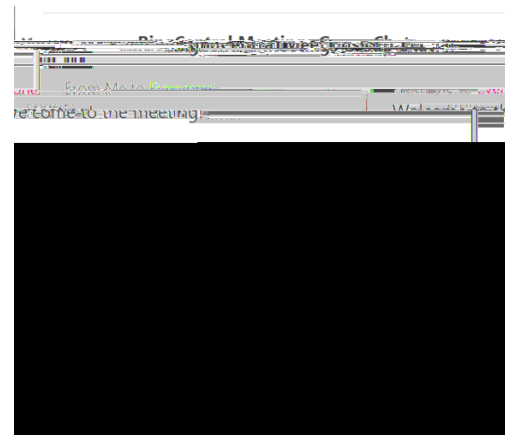
Maintain Zero Tolerance for Any Comment
(Verbal or Written) That is Meant to Attack or
Intimidate Another Person, or is Obscene



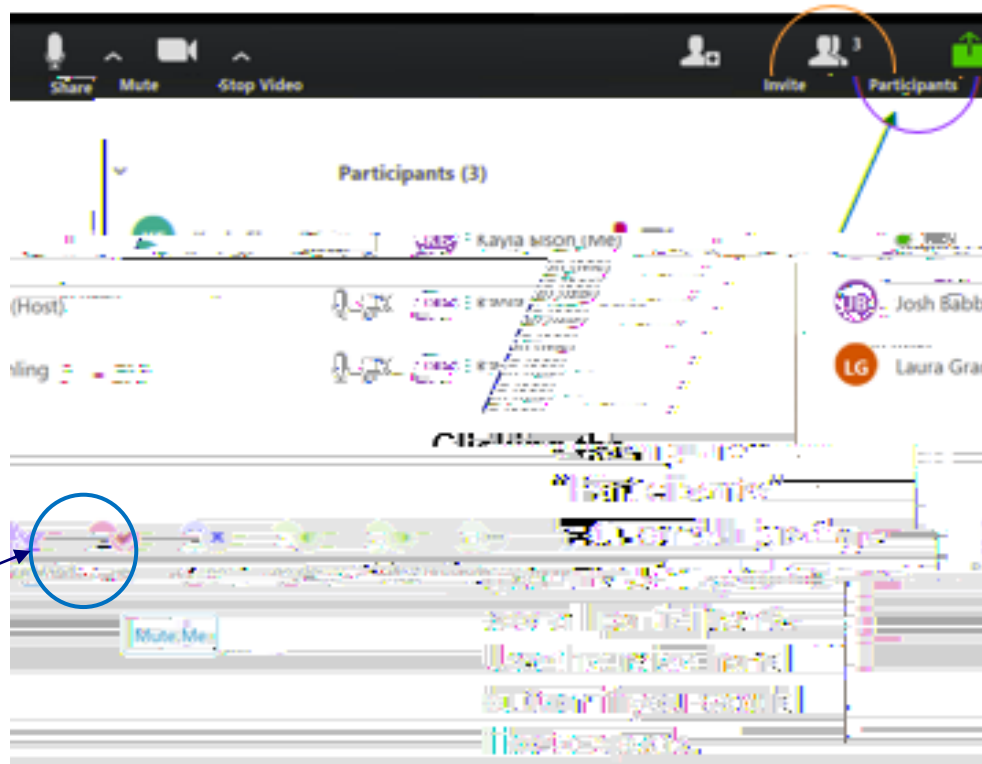


- When the mic is muted a red slash will appear over the microphone icon. Meeting participants will be muted by default except during discussion periods.
- The Video button controls access to your webcam.

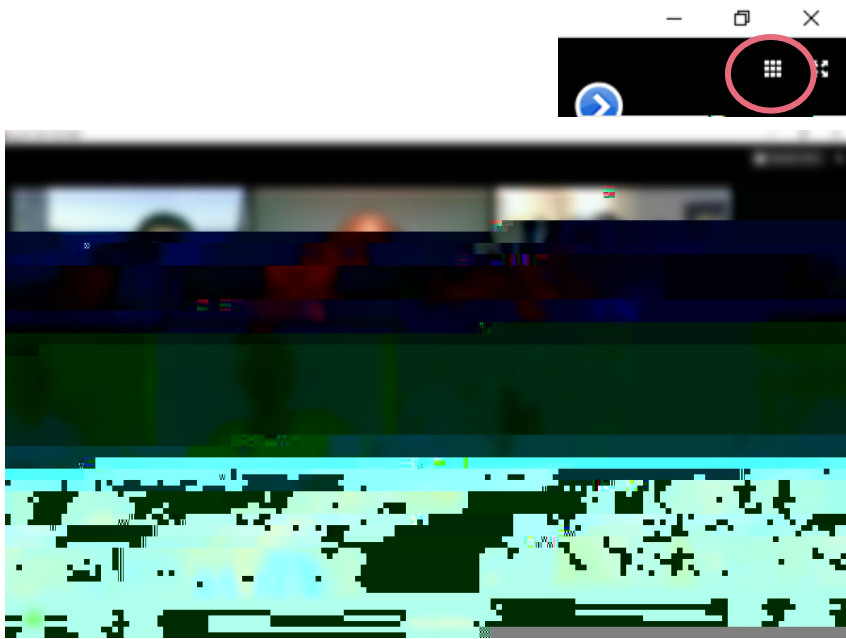
Chat for Questions and Comments.



Toolbar Function: Audio, Video, & Chat



Toolbar Function: Hand-Raising Feature



Speaker & Gallery View

Preliminary Framework Overview



Preliminary Framework Overview

Enrollment (See April 28 Presentation)

Impact of 2016 Zoning Regulations and Proposed Cap
Approach to Enrollment Projections and Impact of COVID-19

Development Plan (See April 28 Presentation)

Potential Development Sites and Alternative Concepts
Campus Places and Mobility Concept

Student Life & Safety

Enhancing On-Campus Student Life
Athletics and Recreation Facilities
Additional On-Campus Student Housing
Updates to Good Neighbor Guidelines
Expanded Orientation Programs and Community Outreach

Transportation & Parking

Overview of Proposed Parking Strategy
Comprehensive Transportation Review (CTR) Process

Student Life and Safety



Reinvigorated **Mary Graydon Center**
Focus on **student health and wellness programs**
Residential/student life/athletics village: Potential



Athletics and Recreation Facilities

Increasing demand for additional space and facilities to **support competitive intercollegiate athletics, recreational sports and fitness programs**

The Campus Plan will propose:

New Center for Athletic Performance

Re-turfed fields at Reeves Field and park at 45th and Massachusetts Avenue, NW

Replacement video scoreboard at Reeves Field

Acoustical sound barrier wall and filming tower at Jacobs Field



Enhanced Student Orientation Programs

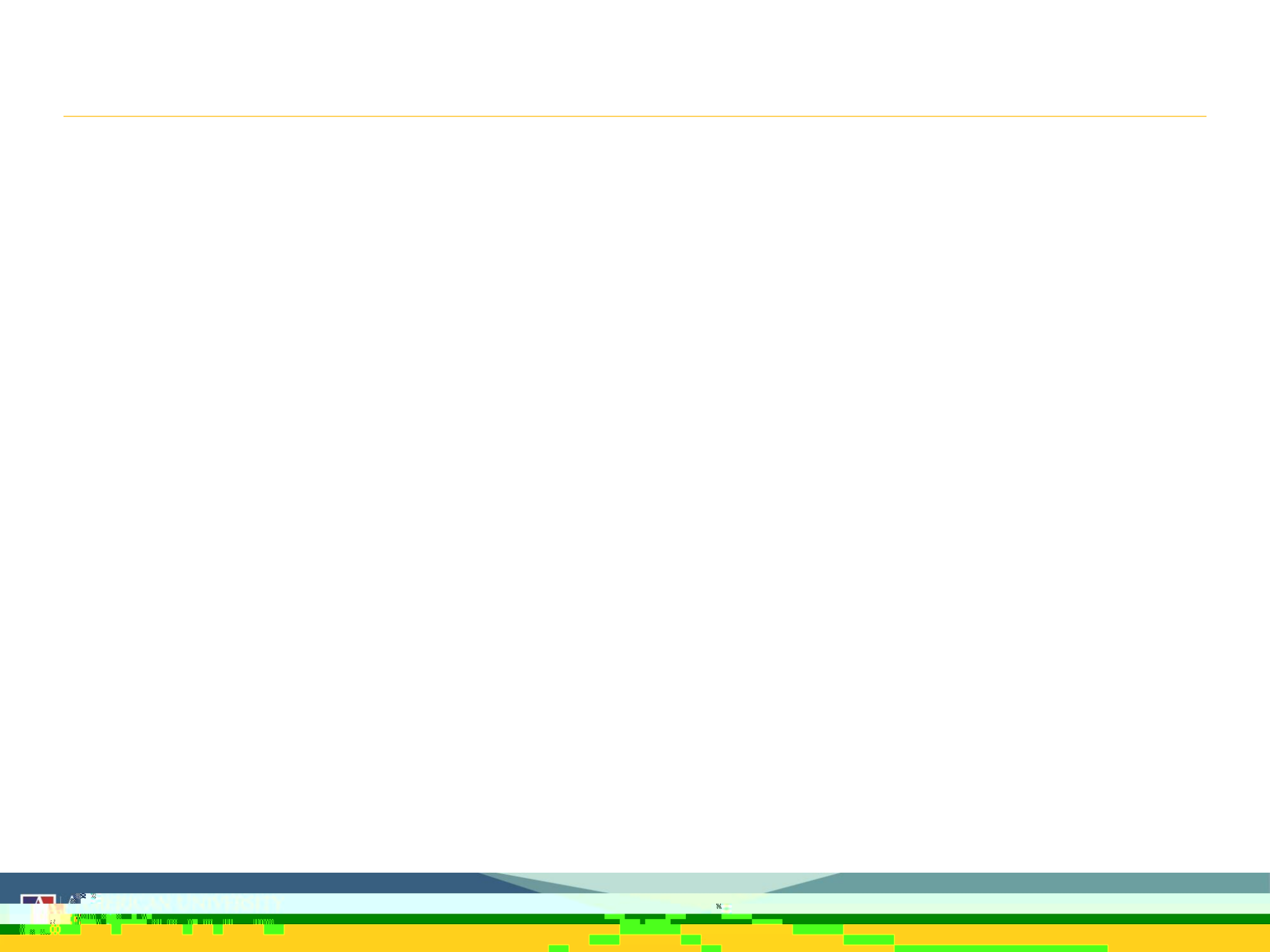
AU has proposed improvements to its off-campus living orientation program **to better inform and educate students who choose to live off-campus of their rights and responsibilities**

Online training module to be developed in consultation with the Student Life & Safety Working Group that students in 20016 and 20008 must complete and affirmatively acknowledge that they have fulfilled the training

Will incorporate the _____ developed in consultation with the Student Life and Safety Working Group which details the responsibilities and obligations associated with living off-campus

in-person off-campus housing orientation program

that students maintain the condition of their property and manage the behavior of their guests
States that AU expects **students to know, understand and abide by the Disorderly Conduct Amendment Act of 2010 and the District of Columbia Noise Control Act of 1977**, both of which address noise disturbances, and which will be detailed during the orientation programs



Transportation and Parking



Proposed Campus Plan Parking Requirement

2011 Campus Plan Requirement: maintain an inventory of approximately **2,200** parking spaces on campus

AU Parking Space Inventory:

	FULL CAPACITY	CURRENT AU USE
Main Campus, Tenley Campus,		

2021 Campus Plan Parking Proposal: maintain parking inventory of **no more than 3,000 parking spaces for university use**

Given current inventory, **no additional parking infrastructure required** over the Campus Plan term

TDM Planning and Enforcement

Continued commitment to comprehensive **Transportation Demand Management (TDM)** planning, currently including:

Shuttle Service

AU/WMATA U*Pass Program

Telework and Distance Learning

Enforcement and Monitoring

Maintain ***Good Neighbor Parking Policy***

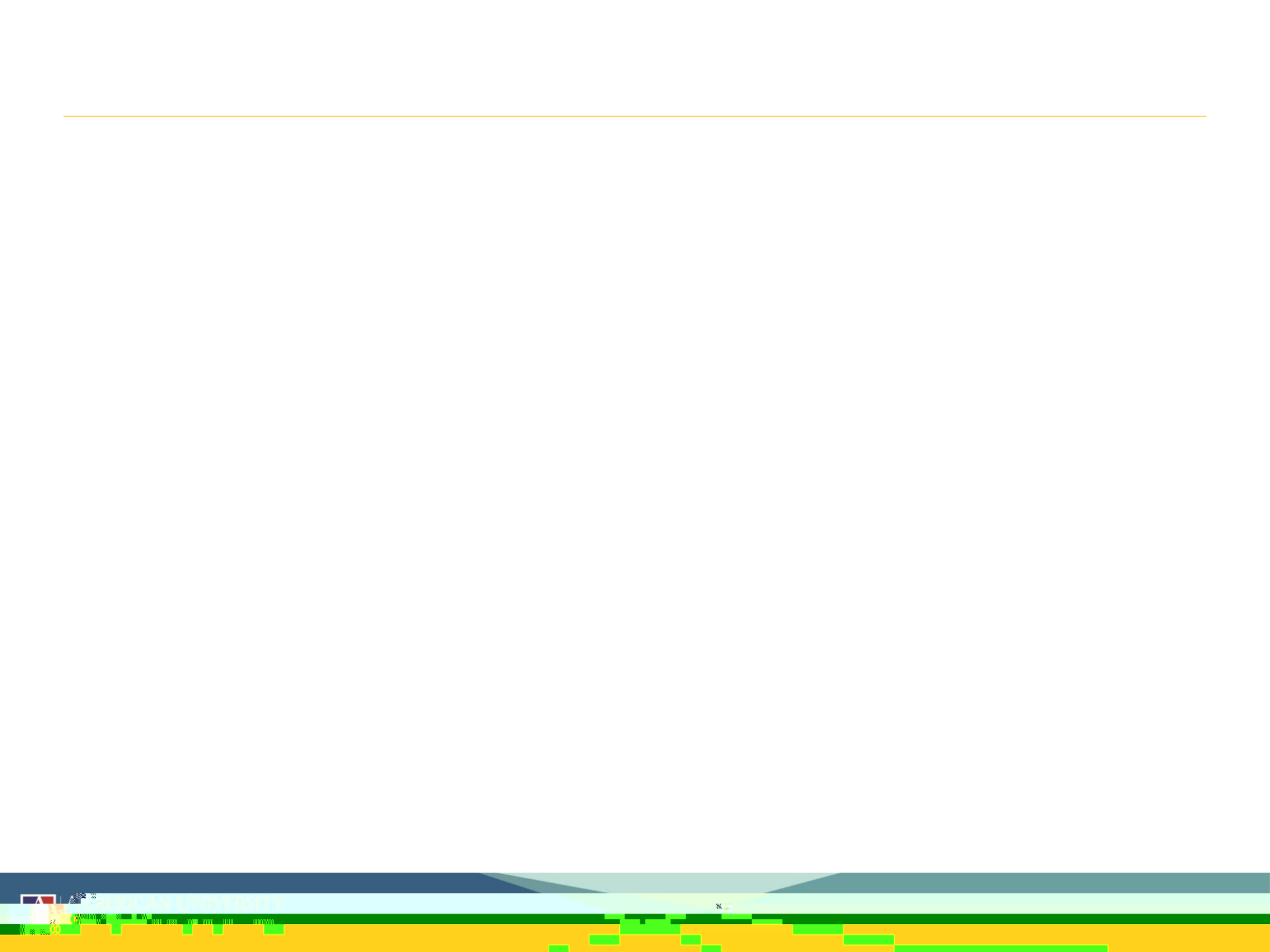
Monitor **parking utilization** of exclusive university-use facilities

Continued **collaboration with Transportation and Parking Working Group and DDoT** to develop appropriate monitoring methods

Traffic Count Data Collection

Counts conducted Tuesday, February 25 Thursday, February 27





Virtual Break Out Session: Transportation and Parking



Upcoming Meetings

May 19: Planning 101 Session (

Closing Remarks

